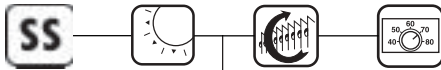


STAINLESS STEEL



RADIANT/PUMP HOUSE HEATER
CORROSION RESISTANT



FEATURES:

- 304 Stainless Steel
- Radiant Heat
- Built-In Thermostat
- Steel Element
- Mounting Feet
- Steel Case with an Expanded Metal Element Shield

MODEL CODE:

U1250-SS
 U Series
 120 Volts
 500 Watts
 SS Stainless Steel



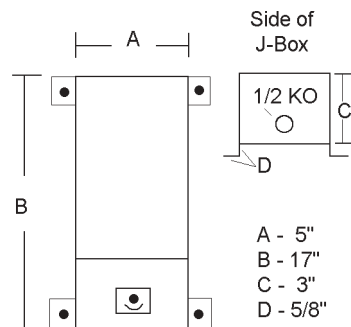
The U Series heater is designed to keep mechanical equipment from freezing such as pumps, valves, and farm machinery. The radiant heat is absorbed by the metal equipment thus making it more effective than convection heaters. This heater is simple and reliable with no moving parts to wear out or maintain. An inexpensive choice when freeze protection is required.

It has a built-in thermostat so it will turn off when the ambient temperature is safely above freezing. The guard keeps foreign objects away from the element and the 304 Stainless Steel construction helps prevent corrosion associated with high moisture locations like pump houses.

SELECTION:

WATTAGE	120V		240V		277V		WEIGHT (lbs)
	MODEL	UPC #093319 PART NO.	MODEL	UPC #093319 PART NO.	MODEL	UPC #093319 PART NO.	
62	U1206-SS	12622					5
187	U1218-SS	12623					
250	U1225-SS	12624	U2425-SS	12634			
500	U1250-SS	12627	U2450-SS	12635			
666					U2766-SS	12610	
750			U2475-SS	12636			
1000			U24100-SS	12637			

DIMENSIONS



ENGINEERING SPECIFICATIONS:

Contractor shall supply and install, U Pump House series radiant heaters, manufactured by King Electrical Mfg. Company. Heaters shall be of the wattage and voltage as indicated on the plans.

Element: 304 or 840 Stainless

Thermostat: Built-in snap action with a range of 40° to 90° F

Safety Limit: Capillary tube running the full length of the element provides over-temperature protection, automatically resets when temperature drops

Enclosure: 20 gauge 304 Stainless Steel case with an expanded stainless steel metal element shield.